

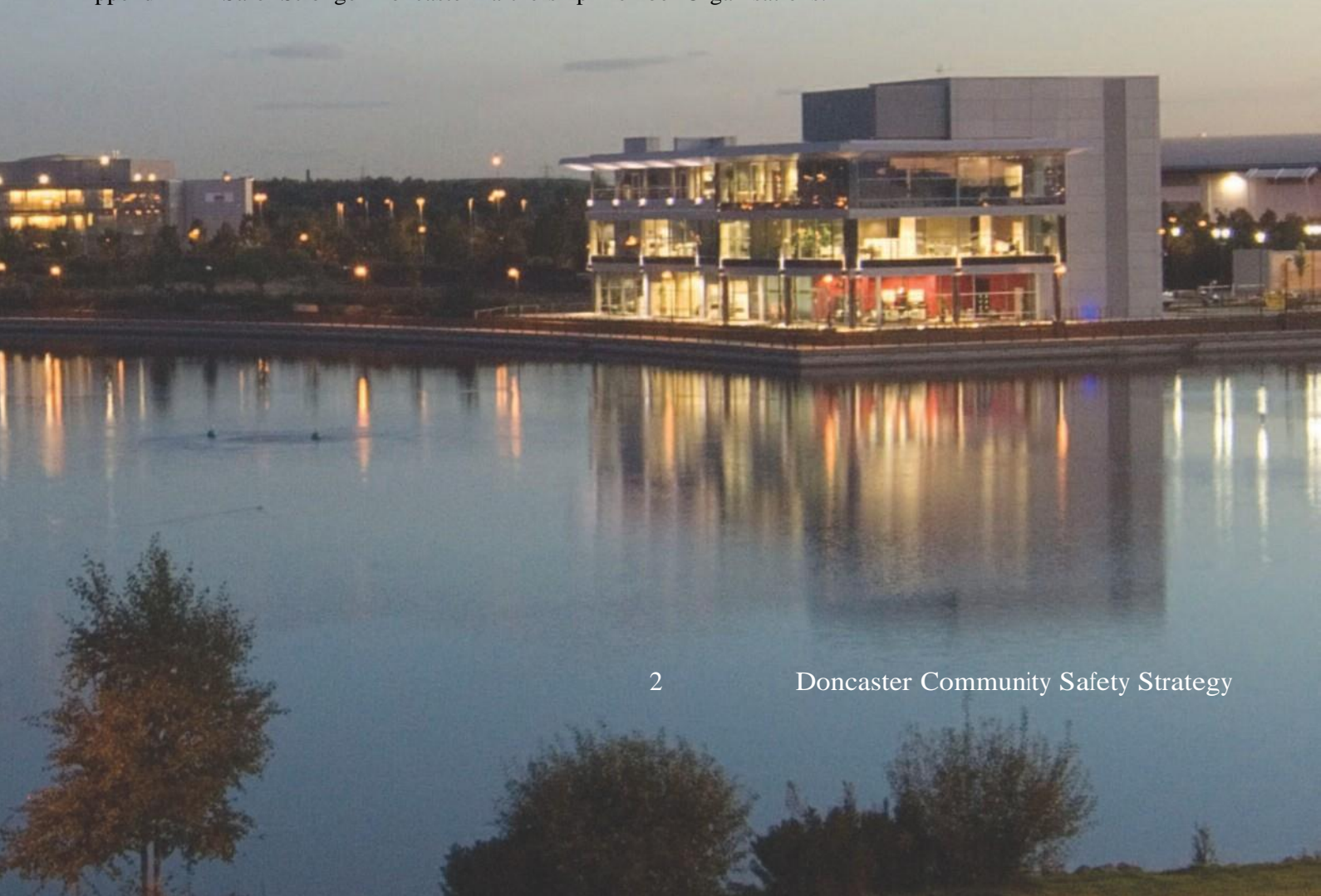
# Doncaster Community Safety Strategy 2014 - 2017

*Making Doncaster Safer Together*



## Contents

Foreword.....	3
Key Achievements .....	4
Community Safety in Doncaster: An Overview.....	5
Priority One: Protecting Vulnerable People.....	8
Domestic Violence and Abuse.....	8
Sexual Violence and Abuse.....	11
Child Sexual Exploitation.....	12
Priority Two: Reduce ASB, Crime and Re-offending.....	13
Anti-Social Behaviour .....	13
Reducing Crime and Re-offending.....	16
Serious and Organised Crime .....	19
Restorative Justice .....	20
CCTV in Doncaster.....	21
Priority Three: Reduce Substance and Alcohol Misuse and the Associated Effects on Crime .....	23
Community Consultations .....	25
Headline Summary of Responses .....	25
Communicating with residents about our work.....	27
Safer Stronger Doncaster Partnership Structure .....	28
Conclusion.....	29
Appendix A – Safer Stronger Doncaster Partnership Member Organisations: .....	30



## Foreword

We are pleased to introduce the revised 2015 Community Safety Strategy, which outlines to our residents and Communities what they can expect from the Safer Stronger Doncaster Partnership.

In this Strategy we set out our ambitions to address local issues, whilst recognising the influence of wider transformational change.

We are aware there will be unprecedented reductions on funding for Public services over the next few years; including Police services and other partners. This means we will need to focus the resources we have on new ways of working between all partner agencies, who can deliver Community Safety outcomes better together.

Overall the Partnership has continued to achieve successful reductions in Crime and Anti-Social Behaviour and as an illustration during the period February to April 2015; Anti-Social Behaviour fell by 4% and house burglaries by 33%, when compared to the same period last year. Over the last 3 years overall crime has reduced by 7% which equates to 2,000 fewer victims of crime.

Tackling Domestic Abuse continues to be a priority for the Partnership and we have invested significant resources in addressing this important issue, providing additional support to victims and an integrated response to the whole family. Whilst reported incidents of Domestic abuse have risen over a number of years, this year we have seen a small reduction in the number of reports to the Police, which may be an indication that our approach is having a positive effect.

Within the Strategy we have outlined our important role in tackling Child Sexual Exploitation, supporting the vital work of the Doncaster Safeguarding Children's Board and raising awareness of this issue within our Communities and Partnership.

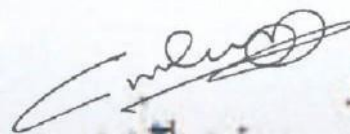
A further new area for us is our role in tackling Serious and Organised Crime, where the Government have recognised how we as a Local Partnership, can contribute to this agenda. We will be working alongside existing county wide groups, raising awareness, sharing information and training staff to recognise the signs of new and emerging crime trends. In particular recognising the emergence of the internet as a way of targeting victims.

The 2015 Community Safety Strategy has built on previous work and intelligence as well as, enabling our communities and partners the opportunity to contribute to the review of our priorities and have their say about how we tackle crime and disorder issues and protect vulnerable people.

Whilst we acknowledge the difficult landscape we are in, our Partnership will continue to use innovative methods and creative new ways of working, ensuring that we work together and alongside our communities to produce better outcomes.

It is the responsibility of everyone who lives and works in Doncaster to play their part in making our neighbourhoods safer and stronger. The success of this Strategy relies on us all working together to achieve further improvements in Community Safety, responding to challenges and building on our success.

Chair of Doncaster Safer Stronger Partnership  
Councillor Chris McGuinness  
Doncaster Council



# Key Achievements

Throughout the strategy a number of achievements are highlighted which demonstrates progress in on meeting our priorities of protecting vulnerable people, reducing crime, anti-social behaviour and re-offending and reducing substance and alcohol misuse and the associated effects on crime.

We would like to thank all partners for their contribution to these achievements and acknowledge the support of all Communities in this success.

Over the last year:

- Overall crime has been reduced by 7% which equates to 2,000 fewer victims of crime.
- There has been a 7.9% reduction in criminal damage.
- Anti-social behaviour continues to fall, with a 4% reduction in the last quarter.
- Our partnership Neighbourhood Response Team has dealt with over 19,500 incidents some of which involved supporting very vulnerable people.
- House Burglaries have reduced by 33% with the help of partnership initiatives to target hot spot areas.
- Victims of Domestic Abuse and their families now have access to a 24 hour helpline and additional caseworkers to support victims and their families. Around 400 families have already received support.
- Doncaster has launched a new programme to support those that want to change their abusive behaviour and early indications are that this is really helping people to change their behaviour.
- For the first time in years reported incidents of Domestic Abuse has started to fall.
- There has been a 25% reduction in adult re-offending which equates to over 7,000 less offences.
- We have taken a robust approach to people selling Novel Psychoactive Substances (legal highs), closing Town Centre premises and tackling the associated issues of anti-social behaviour and significant community concern.
- Working in partnership with the Police we have developed a centralised CCTV and Alarm Monitoring Service with no reduction in the number of CCTV cameras in the Borough – there are over 1000 cameras in use at any one time.
- We are about to launch our new Community Justice Panels supported by volunteers to tackle low level offending, anti-social behaviour and neighbour disputes.
- Reduced Hate Crime by 24% with a strong focus this year on training staff to recognise and deal with this disturbing crime.
- Increased the number of volunteers involved in their local communities and supported local groups to develop activities and services within their neighbourhoods.
- Successfully supported over 870 families to turn around their lives, getting children back into schools, stopping anti-social behaviour and in some cases helping people into work.
- Secured Police and Crime Commissioner funding for a dedicated Police officer to work within the Offender Management Unit, targeting the ‘top ten’ Domestic Abuse offenders. The officer has been involved in hundreds of arrests and our good practice approach is now being mirrored in other areas of South Yorkshire.
- Developed a new sex worker support service, which has enabled over 100 women to access a mobile service. Several women have managed to exit this lifestyle through the support of the project.
- Successfully dealt with a number of community tension issue involving Hexthorpe, responding with highly visible partnership activity, litter removal campaigns, community engagement and the introduction of a selective licensing scheme.

# Community Safety in Doncaster: An Overview

Crime reduction and community safety are not the sole responsibilities of any one agency organisation or group. They are the responsibility of individuals and communities as well as all the agencies that form the Safer Stronger Doncaster Partnership (SSDP). A list of all agencies forming the Partnership is shown at Appendix A.

By working together we can make Doncaster a safer place to live work and visit. Working together to reduce crime and disorder is vitally important as the effects damage individuals, families and the wider community. Implementing this strategy effectively will help Doncaster thrive: helping drive down business crime, improving the economy, and enhancing the health and well-being of all residents.

Doncaster covers an area of 224 square miles and has a population of around 303,600, an increase of 17,600 residents since 2001. The town is located at the heart of national rail and road networks, and served by a local international airport, these can bring significant opportunities to the town. Within Doncaster there are 4 prisons, which presents challenges around offender management and dealing with crimes and incidents that occur within these establishments. The Prisons are a key partner of the SSDP to co-ordinate and inform our response to these unique issues.

Doncaster's population is becoming more diverse, the 'White British' population has fallen by almost 5% between 2001 and 2011, with the main minority ethnic group being 'White Polish'. There is also a rising ageing population and alongside other towns and cities, new Communities are emerging as a result of migration from Europe and other continents. It is therefore a challenge for the Partnership and other public services, to ensure they are mindful of and responsive to the varying needs of our diverse communities.

This year we have carried a refresh of the Community Safety Strategy to ensure our current priorities are still correct and importantly reflect the needs of all Communities. We began by refreshing our Joint Strategic Intelligence Assessment (JSIA) which confirmed the partnership priorities. We then captured wider views from the community through a range of community consultation

events, face to face meetings with key networks and groups, as well as an on line questionnaire, which has been made available in paper form for those individuals without access to a computer.

Engagement has taken place across all parts of the Borough in shopping centres, Schools, Colleges, Social Education Centres, food banks and specialist services for victims of crime.

A key focus of our review has been engagement with Communities and groups who sometimes don't have the opportunity to engage. This has included venues such as the Conversation Club (a meeting place for asylum seekers) and places of Worship, including the Doncaster Faiths Together network.

The questionnaire was also distributed to a wide range of voluntary partnership agencies to ensure that all groups and networks felt they had a voice and a contribution to make to our review.



Through the questionnaire and face to face meetings we asked our Communities their perceptions of feeling safe, the impact of crime and anti-social behaviour in their communities and what they saw as the future priorities of the partnership and importantly how our services could be improved to meet their needs.

Over 1200 responses from the public gave a clear indication that 76% of those who responded felt safe in Doncaster most or all of the time and 72% of the respondents felt that agencies of the partnership were either effective or very effective at tackling crime and disorder.

Respondents also felt that our current priorities should remain as the continued priorities of the Partnership.

Whilst the results of the review are encouraging, there is certainly no room for complacency and many residents felt that we could improve our services by being more visible, with a quicker response to incidents and more emphasis should be placed on educating young people about the effects of crime and anti-social behaviour.

Doncaster will continue to respond effectively to these challenges and build on its track record of implementing new Partnership mechanisms in response to changing trends and patterns

In response to these concerns, Doncaster has been one of the first Policing areas in South Yorkshire to implement a new Policing Model, which has led to more visible resources being available to respond to incidents. The new 'Local Policing Model' introduced on the 1st March 2015 delivers highly visible dedicated Policing teams using new mobile technology to enable officers to work in the Community for longer, without the need to return to Police Stations to complete reports.

The DMBC Neighbourhood Response team remains as a highly visible Partnership resource, providing a first line response to anti-social behaviour and being key to the Councils early intervention model working alongside the Police and Communities Area Teams. The team have responded to 19,500 incidents in the last year and used mobile technology to maximise their patrol time and visibility within local communities. The team now have new mobile CCTV capability fitted to vehicles, enabling them to transmit and record incidents of anti-social behaviour to assist with evidence gathering and prosecutions.

This new technology was used recently, working alongside the Police, Neighbourhood Teams and St Leger Homes to conduct a joint off road motorcycle operation in the West area of Doncaster. As a direct result of the operation five off road motorcycles were seized and nine warnings were

issued. Responding to the concerns of local residents in this way has significantly reduced noise related anti-social behaviour.



Educating young people about the effects of crime and anti-social behaviour will be a key measure within our new Restorative Justice Programme. Using a network of volunteers the programme will provide restorative justice services within all our Communities to tackle anti-social behaviour, low level offending and neighbour disputes.

One important aspect of the programme is enabling participants to make amends for their actions. Statistically we are aware that most of the participants in the programme are young people, which will enable them to be made aware of the impact of their actions.

The work of the Partnership Stronger Communities agenda continues with a large focus on community involvement; community activity and volunteering, recognising that active, inclusive communities are safer and fairer communities for all. This year we have seen an increase in the number of volunteers to over 1,400 and a total of 2,400 groups are now supported in the Community by our Communities Area Teams. This provides a strong indication of the reach and impact of the community involvement, activity and inclusivity agenda.

The Partnership recognises our significant role in the agendas of Sexual Abuse, Child Sexual Exploitation and Serious and Organised Crime and the challenges presented by these issues.

Criminal offending behaviours and techniques have now started to change from traditional crime types such as property crime, to more elaborate and sophisticated behaviours using the internet to target and identify victims. We need to be aware of this change in offending and use our strength as a Partnership to respond to these new and emerging trends, educating the public and focusing on prevention.

Our existing models of early intervention and prevention will still be key, informing and educating the public and responding to issues in a more timely way. This has been a successful approach to meeting the challenge presented by Novel Psychoactive substances (legal highs) where a group of Partners formed a thematic group to co-ordinate our approach.

This successful model of intervention will be repeated in the future, to respond to new trends and emerging threats facing our communities.

The Doncaster Safeguarding Adults Board (DSAB) has a key responsibility for adult safeguarding issues and the Safer Stronger Doncaster Partnership holds a vital link with this board. We work closely together on safeguarding issues and provide regular updates to the Board on areas that include tackling Domestic Abuse and the Prevent agenda. One example of our joint working is the 'Keeping Safe Forum', who were a key contributor to our review. The forum held a stakeholder event in April 2014 which was attended by a range of agencies and was an ideal opportunity to raise the profile of safeguarding adults, encouraging all participants to actively promote and distribute the message that "safeguarding is everyone's business".

Throughout 2015 the SSDP will maintain close links to the DSAB and the Doncaster Safeguarding Children's Board (DSCB), particularly as there are a number of identified new areas of work emerging from the 2014 Care Act, which relate to safeguarding.

Other examples of our joint work include work around youth offending and tackling crime and anti-social behaviour by providing suitable diversionary activities at specific times or in identified hotspots and locations.

The Youth Offending Service are also a key member of our ASB panel.



We also work together to reduce and manage offending behaviour, working with young people and their families to reduce violent behaviour and Domestic Abuse in the family environment.

The consultation and engagement from the review of the Community Safety Strategy, the Partnership Development day and the findings of the Joint Strategic Intelligence Assessment have combined to provide a strong platform from which we have been able to review our Strategic approach and priorities as a Partnership.

Our existing priorities are:

- Protecting vulnerable people
- Reducing crime, anti-social behaviour and re-offending and
- Reduce substance and alcohol misuse and the associated effects on crime

During 2015/16 the priorities of the Safer Stronger Doncaster Partnership will remain un-changed, as it is clear they are robust, fit for purpose and cover the outcomes and important issues of our partners and Communities.





## Where do we want to be?

Our vision for an integrated response to the whole family is that all services are working together to the same agreed objectives. Our response to domestic abuse is thus embedded into our work with families at all levels.

Prevention is at the heart of all Partnership action; work is continuing to change attitudes in relation to domestic abuse to reduce the number of incidents in the future, thereby reducing the risk to victims and improving safety for families. Through delivery of a co-ordinated multi agency service the Safer Stronger Doncaster Partnership are committed to ensuring that:

- Domestic Abuse is not socially acceptable and will not be tolerated in Doncaster.
- Every report of domestic abuse is treated seriously from the point of disclosure.
- There is immediate action to assess the level of risk and make the victim and family safe, where needed.
- Every investigation and prosecution is conducted thoroughly and professionally
- Every victim of domestic abuse is treated with dignity and has access to appropriate help.
- Help is available for the whole family to recover from the experience of abuse and to build the skills to cope into the future.
- Perpetrators are held accountable and are challenged to change their behaviour.

## How do we get there?

We will continue to build on what we have already achieved. Significant progress has been made but there is still much more to do in ensuring that domestic abuse services to victims, perpetrators and families continue to develop. An area of development that has been recognised is the gap that exists in terms of the support to children within families affected by Domestic Violence and Abuse. The new Children's Trust working with the SSDP and other partners have been successful in gaining Central Government funding of £3.1m to develop new services for Children affected by Domestic Abuse. This new project called 'Growing Futures' involves the recruitment of a

significant number staff known as Domestic Abuse Navigators, who will work intensively with children and families affected by Domestic Abuse. These new posts will work alongside our existing services, developing early interventions, identifying needs and enabling families to access support.



Additional training will be provided to staff to help them recognise the signs of abuse and new programmes will also be developed to enable Children to recover and move on from their experience.

To deliver the vision of “An integrated response to the whole family”, we will:

- Focus on Prevention and Education including public awareness.
- Continue to deliver a multi-agency Workforce Development Strategy and Capability Framework to raise awareness amongst practitioners.
- Develop a wider menu of interventions to support Children and Young People affected by domestic abuse.
- Further develop the Domestic Abuse Hub to include more partners.
- Continue to deliver a quality Victim Service which includes emergency Refuge and Housing provision to support victims fleeing domestic abuse.
- Further develop and fully evaluate the Foundation4Change perpetrator service.

- Consolidate the response to high risk victims by continuing to effectively manage risk and safety through the IDVA Service and MARAC process.
- Re-commission services as the current funding platform concludes.
- Commission new services and de-commission existing services as required.
- Produce robust evidence of outcomes across all services to inform commissioning and ensure quality of services.

### Workforce Development

Last year, over 1000 staff, from a range of partner agencies, have been trained to recognise and respond to disclosures of domestic abuse.

Delivering these key priorities will enable partners to maintain and improve the service to victims and families, reduce risk and increase safety for the significant number of Doncaster families affected by domestic abuse.



### Clients of the Domestic Abuse Victim Service said:

‘...thank you so much. I would not have gone to court if you weren’t with me.’

‘I look back and I can’t believe that was me. Everything is different now. I can’t wait for you to see my new house!’

### Changing Behaviours

The Foundation4Change Domestic Abuse programme has received over 150 referrals, with 90 in the assessment process and 31 having successfully completed the full programme.

### Supporting Victims and families affected by Domestic Abuse

In just over a year, over 400 clients have received support from the Area based Domestic Abuse Caseworkers and over 600 high risk cases of Domestic Abuse have been supported by the Independent Domestic Violence Advocates.

## *Sexual Violence and Abuse*

### Where are we now?

The Partnership has its own local Sexual Violence and Abuse Strategy and a Sexual Violence and Abuse Theme Group which oversees work to tackle all aspects of sexual abuse.

Sexual abuse is significantly under reported to the police, although higher numbers contact voluntary sector services. Current voluntary sector service provision for victims is through Doncaster Rape and Sexual Abuse Counselling Service, which provides specialist counselling and an Independent Sexual Violence Advocacy Service.

In addition, the Sexual Assault Referral Centre based at Rotherham Hospital, provides immediate care and support for victims across South Yorkshire. The South Yorkshire Police Apollo Unit supports victims going through the court process, and works in tandem with the Independent Sexual Violence Advocacy (ISVA) service to ensure a holistic service is provided.

Doncaster was recently successful in a bid for Government funding for additional support services for sexual abuse victims.

Changing Lives at Doncaster Women's Centre also provides a range of support services for women affected by sexual abuse. Grants were awarded to DRASACS and Changing Lives to develop services and increase provision.

### Where do we want to be?

A strategic review of sexual violence and abuse has been completed and will be published shortly. This provides evidence of the extent of sexual abuse locally including unreported sexual abuse.

The following Key strategic outcomes have been agreed:

- People in Doncaster don't experience sexual abuse, harassment and violence, and regard it as unacceptable.
- Victims of sexual violence and abuse receive quality and timely support to assist recovery.

There have been significant increases in reports of sexual offences over recent years some of which is of historical abuse. A total of 656 reports of sexual assault were made in 2014.

### How do we get there?

The partnership will deliver their strategy on Sexual Violence and Abuse using the following objectives:

- Strong Partnership working and robust reporting structure across Team Doncaster Board agenda, recognising that Sexual Violence and Abuse is a cross-cutting issue.
- Deliver communications plan on all aspects of sexual abuse to raise public awareness that it is unacceptable.
- Provide children and young people with age appropriate information on respectful relationships by delivering education programmes in schools and through the Lifewise Centre.
- Respond as early as possible to issues of sexual abuse, to prevent escalation.
- Provide staff in all agencies with training to recognise and respond appropriately to disclosures of sexual abuse.
- Ensure co-ordinated response to incidents focused on safety and welfare of victim and any children.
- Ensure marginalised and vulnerable groups are able to access appropriate support.
- Encourage and support victims to report to the Police, recognising the various barriers to reporting and addressing them.

- Ensure a robust Police response to reports, backed by effective support for victims and witnesses and work pro-actively to maximise prosecutions.
- Manage offenders effectively to protect communities and reduce re-offending.

### **Child Sexual Exploitation**

The Partnership recognises the threat posed by Child Sexual Exploitation (CSE) and the concern this raises within our Communities.



CSE in Doncaster is taken very seriously and under the Doncaster Safeguarding Children’s Board (DSCB) there exists a specific theme group that is responsible for implementing the CSE Strategy and monitoring the actions that emerge from this Strategy. Further information can be obtained from the DSCB website.

The SSDP Partnership fully recognises the part that we have to play in tackling CSE and raising awareness

of the issue and many of the key members of the SSDP are represented on the Safeguarding Children’s Board, theme groups and the sub groups that exist to support the robust approach taken in Doncaster.

A recent peer review of CSE in Doncaster noted that there were some strong developments around the way CSE is being tackled and these were evolving well.

Regular reports are made to the SSDP in terms of progress and we are fully committed to supporting the CSE Strategy by ensuring there is synergy, co-operation and collaboration between our approach and the Doncaster Safeguarding Children’s Board.



# Priority Two: Reduce ASB, Crime and Re-offending

## *Anti-Social Behaviour*

### Where are we now?

Anti-social behaviour is consistently one of the most important issues for residents, which is why this remains a priority for the SSDP.

There has been a reduction in police recorded anti-social behaviour from 16162 to 15729 incidents during the year 2013/2014. This represents a 2.7% reduction, and follows a larger reduction of 26% during 2012/13

During the first part of 2014/15 we recognised a small increase in overall levels of anti-social behaviour and given the high importance attached to tackling anti-social behaviour by the public and agencies alike, the Partnership focused significant resources both strategically and operationally in order to improve performance. Pleasingly we have now seen performance improve, by focusing our activities in those areas where analysis showed an increase had occurred. Incidents of anti-social behaviour have now returned to normal levels, however through the ASB theme group close monitoring will continue.

Performance in relation to criminal damage remains positive. By the end of October 2014, we saw a 2.5% reduction compared to the same period in 2013 (1959 incidents year to date compared with 2004 incidents from April – October 2013).

The Partnership's current Anti-Social Behaviour Strategy recognises the importance of meeting the needs of victims of anti-social behaviour and properly reflecting these needs in the range of work it undertakes. A significant contribution to meeting victims' needs has been the introduction of a multi-agency Anti-Social Behaviour Panel.

This panel meets monthly to ensure that the needs of individual victims of anti-social behaviour who are deemed to be at significant risk of harm are being met.

Since its inception the Panel has considered the needs of over 260 individuals and has been able to co-ordinate prompt and effective action to resolve a large number of issues that, if left, may well have resulted in serious harm to victims. Many of the cases dealt with by the panel may have involved vulnerable adults and the work of the panel is imperative in meeting the strategic safeguarding objectives of the Safeguarding Adults Board. A member of the SSDP sits on the Safeguarding Adults board to ensure cross cutting issues such as this are captured within the work of all the theme groups that operate as part of the SSDP.

In 2014 new anti-social behaviour legislation was introduced, which reviewed existing Powers and also introduced some new measures. A specific new measure, the Community Trigger, provides members of the public with the right to request a review of how agencies have collectively managed their anti-social behaviour case. Partners have also embraced revised Powers and have already used the Closure Power, Community Protection Notices and Dispersal Powers to good effect.



Doncaster undertakes considerable activity that aims to prevent anti-social behaviour before it happens or to intervene early to stop any on-going anti-social behaviour becoming far more serious. As an example, the Neighbourhood Response Team (NRT) attended over 19,500 incidents, last year, many of which related to ASB.

Communities' Area Teams in collaboration with other partners such as South Yorkshire Police and St Leger Homes within Safer Neighbourhood Teams carry out a wide range of activities aimed at prevention and early intervention. These include the investigation of low level anti-social behaviour cases, working in schools to promote good behaviour, and the co-ordination and delivery of diversionary activities. During 14/15 the Area Teams dealt with in excess of 1,600 local ASB cases and supported nearly 2,500 individuals, including vulnerable victims.

### Where do we want to be?

The partnership is committed to continue the good progress that has been made and has therefore set itself further robust targets of a 2% reduction in anti-social behaviour during 2014/15, building on the significant reductions in previous years.

“The partnership is committed to continue the good progress that has been made and a target for reducing ASB has been set for 2015/16 and we now monitor satisfaction levels of vulnerable victims”

We recognise that it is important for residents to feel safe and be confident that the services we provide will be effective in tackling the crime and anti-social behaviour that they are most concerned about. We are particularly committed to making sure that the most vulnerable victims of anti-social behaviour are satisfied with the service they receive from Partnership agencies. We have therefore recently introduced a measure to monitor satisfaction levels of vulnerable victims in respect of the service they receive.

### How do we get there?

We are facing particularly challenging times over the coming years, with reductions in the financial and other resources available to tackle crime and disorder. In order to achieve our objectives, individual partners are prioritising resources and activity into dealing with anti-social behaviour. As well as the prioritisation of resources within individual partner agencies, collaborative working will continue to be undertaken in order to make most effective use of available resources.

A key role of the group in this area of its activity is to make sure that our collective efforts maintain an appropriate balance between the three interconnected strands of prevention, intervention and enforcement.



Under the strand of prevention and early intervention there is significant joint working between area teams and key partners such as SYP, St Leger Homes and the Stronger Families agenda. This focuses on ASB at a very local level, where agencies work together collectively, using shared resources and expertise to prevent escalation. Examples of this work includes: improved lighting, mobile CCTV cameras, additional patrols and diversionary activities for young people and families.

In the specific context of ‘enforcement’ the Partnership has focused a significant degree of its activity on preparing for the use of powers contained within the Anti-Social Behaviour, Crime and Policing Act 2014. In essence 6 new powers are available to be used either individually or together in order to tackle a wide range of anti-social behaviour caused by individuals or affecting a locality.



The Enforcement Team within DMBC have undertaken a restructure, taking account of these changes and they now link in with the Local Policing Team Structure which was recently introduced by SYP.

Police ASB officers are now based on an area level, working closely with partners and the ASB Theme group.

New ways of working with all partners have been developed which will result in stronger governance arrangements and improved ownership and evidence gathering for those cases that are escalated to a prosecution level.

## *Reducing Crime and Re-offending*

### *Where are we now?*

Statistically it is known that relatively small numbers of offenders, often repeat offenders, commit much of the serious acquisitive crime in Doncaster, in common with other areas. Managing them effectively can have a significant impact on both re-offending and acquisitive crime figures.

The strategic Reducing Re-offending and Serious Acquisitive Crime Theme Group is jointly chaired by South Yorkshire Police and the Community Rehabilitation Company (formerly South Yorkshire Probation). It meets bi-monthly and has a range of partners in attendance including South Yorkshire Police, Community Rehabilitation Company, Doncaster Council, the Prison Service, St Leger Homes and voluntary groups.

Serious acquisitive crime is the term used for crimes including burglary, theft from vehicles, robbery and theft of vehicles.

Since 2010 there has been an overall reduction of 20% in serious acquisitive crime.

The first three months of 2015 recorded the lowest burglary figures for 10 years, but we recognise that burglary of people's homes remains a top priority and particular areas are more disproportionately affected more than others.

Up to 30% of burglaries occur due to insecure properties, and it is important to continue to raise public awareness around home security. Working with voluntary groups and partners including St Leger Homes of Doncaster on initiatives including media campaigns highlighting how residents can quickly and cost effectively increase their home security has encouraged residents to become more security conscious.

At a strategic level a Police crime reduction officer works alongside the DMBC Major Projects and Planning Department to ensure that all new developments, whether commercial or residential, include the very latest advice and features to 'design out crime'. Features which include the provision of effective street lighting, the removal of 'blind corners' in alleyways and the inclusion of secure by design locks in windows and doors.

All work to reduce re-offending falls under the broad framework of Integrated Offender Management (IOM). The purpose of IOM is to ensure effective management of prolific offenders, and those offenders who have



been assessed as causing the greatest harm to communities.

This involves providing enhanced support to around two hundred of our most problematic offenders to reduce the likelihood of re-offending.

In Doncaster since 2010 there has been a 25% reduction in re-offending – this equates to over 7000 offences. Throughout the South Yorkshire region re-offending is down 9.89% which, in comparison to the national average of just under 1% reduction, is very positive.

### Where do we want to be?

The Partnership is committed to continuing the progress that has been made and will continue to contribute to a reduction in overall crime through the work of the serious acquisitive crime and reducing re-offending teams.

Since 2010 there has been a 25% reduction in re-offending – this equates to over 7000 offences.

Government policy is for shorter sentences for offenders, with the management of more offenders in the community rather than in prisons. Bringing together the acquisitive crime and reducing re-offending themes indicates the Partnership focus on those offenders who cause the most harm to our communities, and limit their own life chances through re-offending. Continuing to identify and intervene with these offenders, will positively impact on levels of acquisitive crime.

Doncaster's Integrated Offender Management Team consists of CRC staff, Police and voluntary sector support services, working together with a focus on rehabilitation.

In the specific context of 'enforcement' the Partnership has focused a significant degree of its activity on preparing for the use of powers contained within the Anti-Social Behaviour, Crime and Policing Act 2014. In essence 6 new powers are available to be used either individually or together in order to tackle a wide range

of anti-social behaviour caused by individuals or affecting a locality.

This includes signposting to specialist services and helping offenders to access appropriate mainstream services and opportunities including housing, benefits, health services, education training and employment.

Overall the aim is to engage partners and communities in tackling serious acquisitive crime, through public awareness-raising about prevention; intelligence gathering, Community Payback, and providing the support offenders need to change their behaviour.

### How do we get there?

During 2015 South Yorkshire Police and key partners are introducing a new re-offending model, which will increase the cohort of offenders being supervised, widening it to include Domestic Abuse, Child Sexual Exploitation offenders and those engaged in Serious and Organised Crime. This will require a refresh of our current structures and approach to ensure local delivery matches the new county wide approach.

Communication between partner agencies and residents is important to gather information about the most problematic offenders. Increasing the methods of reporting suspicious behaviour will enable the partnership to focus resources in hot spot areas. By harnessing the available Partnership resources including St Leger Homes estate staff, as well as Neighbourhood Watch and other local community groups, residents will be encouraged to provide useful intelligence, in the knowledge that it is used to make their area safer.

In the month of February 2015 Doncaster saw the lowest level of recorded house burglaries ever recorded. It is our intention to use this model in other areas of Doncaster where burglary features as a significant issue.

As the probation service has undergone a period of significant change, a key objective is to create more robust methods of information sharing between partners in order to develop a useful performance management framework to record the offending rate of both adults and young people.

The group continue to use an intelligence-led response to domestic burglaries and reducing crime, which will enable increased communication with residents, encouraging them to become more proactive with their personal and household security. It is important that residents are actively engaged in helping to tackle crime, through membership of Neighbourhood Watch, reporting issues to the police and/or Crimestoppers.

Using best practice models to tackle house burglaries, areas of high volume burglary dwellings are quickly identified and additional resources are targeted to these areas. This approach is seen to be working effectively and has led to recent significant decreases in burglary offences.

As the probation service has undergone a period of significant change, a key objective is to create more robust methods of information sharing between partners in order to develop a useful performance management framework to record the offending rate of both adults and young people.

**How secure is your home?**  
**A third of all burglaries occur through insecure properties**

- Make sure garages and sheds are secure
- Consider using security lights or sensors
- Keep windows closed and doors locked
- Consider using timer switches for indoor lights
- If you have a burglar alarm - remember to set it
- Keep fences and hedges maintained
- Don't leave gates open

Open windows, unlocked doors and broken gates make it easy for burglars to target your homes so remember to keep your property as secure as possible at all times.

**Report anything suspicious:**

EMERGENCY	NON-EMERGENCY	ANONYMOUSLY ON CRIMESTOPPERS
<b>999</b>	<b>101</b>	<b>0800 555 111</b>

Logos for Doncaster Council, South Yorkshire Police, and South Yorkshire Police and Crime Commissioner.

## Serious and Organised Crime

### Where are we now?

In October 2013 the Government published a new Serious and Organised Crime Strategy to coincide with the launch of the National Crime Agency.

The aim of the Strategy is to reduce substantially the level of serious and organised crime affecting the UK and its interests. The Strategy took a new approach to the threat creating four new areas of work modelled around the approach to countering terrorism.

These are based around the themes of pursue, prevent, protect and prepare.

Under the theme of pursue the strategy highlights a number of national initiatives, which are aimed at tackling a number of crime types. Whilst this has included traditional types of crime such as Drugs and Firearms, there has also been a new focus on emerging threats such as Child Sexual Exploitation, Foreign national offenders, modern slavery, organised immigration crime and the growing impact from cyber-crime.

The Government have recognised that Local Partnerships have a strong part to play in the Prevent element and have encouraged local Community Safety Partnerships to work alongside established County wide groups.

South Yorkshire Police have established a Local Organised Crime Partnership Board, which is chaired by a Senior Detective. This meeting is attended by representatives from each Community Safety Team from across South Yorkshire.

Recognising the links between Serious and Organised Crime, as a driver for other types of crime within our Communities, Doncaster SSDP holds representation on this Local Organised Crime Partnership Board. Other partners include the Crown Prosecution Service and National Probation Service.

### Where do we want to be?

As a member of the Local Organised Crime Partnership Board Doncaster is forging close links with other agencies that form part of this board, particularly as we are aware that Organised Crime Groups often come into contact with agencies from the local Partnership.

This could involve many routes such as licensing, waste transfer, planning, housing and the disposal of waste materials.

Work is taking place to establish a contacts list within the local authority and key partners to enable law enforcement agencies to develop relationships with individuals to facilitate the sharing of knowledge and information.

### How do we get there?

The main focus of work in Doncaster to support the County wide group relates to the following areas of activity;

- Assist in the development of the Serious and Organised Crime local profile, which will be informed by data supplied from local partners.
- Training of 15 local staff by South Yorkshire Police to raise awareness of and recognise the factors associated with modern slavery.
- Support the county wide approach to legal highs, in particular participating in the South Yorkshire wide days of action to tackle the impact of these substances, raising awareness of their effects and the dangers they pose.
- The SSDP continues to support the current work and actions of the County wide Local Partnership Board.
- Each partner of the SSDP to consider how it can assist in raising awareness of Serious and Organised Crime and the link to local issues within Communities.



## *Restorative Justice*

### *Where are we now?*

Restorative justice is a victim centred approach to justice; focused on repairing the harm caused by offending and restoring relationships. In 2014 a Ministry of Justice pilot scheme introduced Neighbourhood Justice Panels in 15 areas.

These panels were implemented in order to provide restorative services within communities to tackle anti-social behaviour, low level offending and neighbour disputes. The approach relies on volunteers from the local community facilitating the panels, providing them with the tools they need to be involved in dealing with the problems caused by crime and anti-social behaviour that they face.

After the initial success seen in the pilot projects, Doncaster has opted to implement their own restorative justice programme with the introduction of Community Justice Panels.

Jointly funded by St Leger homes and Doncaster Stronger Families, a Community Justice Panel co-ordinator has been recruited to organise and deliver the project.

Currently the panels are in the initial stage of establishing quick and effective referral mechanisms, promoting the project throughout the local community, and recruiting volunteers to facilitate the panels.

The panels have also been allocated funding from the Police and Crime Commissioner for South Yorkshire in order to help with the initial implementation. This funding will be used to help recruit and train a pool of volunteers, and should help with the costs of volunteer expenses.

### *Where do we want to be?*

The primary objective for Community Justice Panels is to reduce anti-social behaviour and re-offending rates in Doncaster and increase victim satisfaction levels.

The latest Ministry of Justice evidence suggests an 85% victim satisfaction rate for those who chose to participate in a restorative intervention. The aim for

Doncaster's Community Justice Panels in the first year of operation will be to meet this victim satisfaction level.

The purpose of the panels will also be to divert potential first time entrants away from the criminal justice system, providing people with a chance to make amends for their actions before authorities go down the more expensive routes of prosecution and criminal conviction.

The process will be collaborative, solution focused and victim initiated, resulting in increased trust in local authority services, greater inclusiveness, less crime, improved relationships and better communication.

With the implementation of the panels it is the hope that Doncaster communities can become more self-sufficient in dealing with anti-social behaviour and low level offending. Restorative Justice will ensure that the wrong doer, harmed person and local community are at the centre of resolving issues that are affecting communities, promoting community cohesion and the restoration of relationships.

A primary objective will also be to reduce stress on statutory services such as the police; one of the key aims will be to reduce repeat call outs to neighbour disputes and anti-social behaviour so services can focus more of their efforts on other higher level offences.

We also want to ensure that Community Justice Panels are a principal intervention for neighbour disputes and anti-social behaviour in appropriate cases, rather than as a last resort after events have escalated.

### *How do we get there?*

Our first priority for achieving success with Community Justice Panels will be to attract around twenty volunteers from across different areas in the borough and to train each volunteer. This training will ensure our volunteers are highly skilled in delivering the panels.

Over the next twelve months we aim to increase understanding and awareness of restorative justice amongst partner agencies. This will begin the process of embedding restorative practice into these agencies so that Community Justice Panels and other restorative interventions can be used as an initial intervention from the start of conflict.

## *CCTV in Doncaster*

### Where are we now?

Doncaster has benefitted from a Partnership CCTV network since 1994, however the original Town Centre System has now grown considerably to cover other large Communities including Thorne, Moorends and Mexborough. CCTV contributes to many of our priorities particularly protecting vulnerable people, and reducing the fear of crime.

CCTV can prevent crime, be instrumental in bringing offenders to justice as well as providing reassurance to residents and visitors to the town.

The Partnership acknowledges the importance for residents to feel safe and be confident in the service we provide; therefore it has developed a jointly integrated and efficient CCTV service in one operating centre.

Working in partnership with South Yorkshire Police, we have now developed a centralised CCTV and Alarm monitoring service for Doncaster, Rotherham and Barnsley Metropolitan Borough Councils. This centralisation activity has been made possible by making effective use of available resources as well drawing in additional funding where necessary.

This innovative approach has enabled us to be more efficient and effective in our CCTV monitoring arrangements and has meant there has been no reduction in the number of CCTV cameras monitored within Doncaster.

This centralised service is providing residents of these towns with an enhanced and effective tool to assist in the prevention and detection of crime, anti-social behaviour, building security and traffic management. From this single site both the Council and Police staff monitor and utilise the cameras that are allocated to each organisation for their specific purpose.

The Partnership acknowledges the importance for residents to feel safe and be confident in the service we provide



### Where do we want to be?

The centralised service will continue to be developed and joint working will become embedded in CCTV and Alarm monitoring across Doncaster, Barnsley and Rotherham.

Each organisation will be responsible for ensuring that the data processed by their cameras is used in line with the requirements of the Data Protection Act 1998 with clear data sharing agreements.

Further efficiency savings will be explored through this process, together with the in-house provision of security arrangements for Doncaster.

## How do we get there?

Teams from both the Council and South Yorkshire Police have been set up to continue to monitor the integration which will lead to an enhanced co-ordinated service for residents across three local authorities; Doncaster, Barnsley and Rotherham.



The model within Doncaster follows the 2007 National Strategy for CCTV and in 2013 a new government led 'Code of Practice' was published, which identifies a number of Guiding Principles for the use of CCTV. The strategy and these principles have been embraced by the CCTV Partnership in order to develop and deliver a jointly integrated and efficient CCTV service.

This guidance will ensure that residents in Doncaster, Rotherham and Barnsley can feel confident that the CCTV systems operated from Doncaster will always be used for a specified purpose which is in pursuit of a legitimate aim and is necessary to meet an identified purpose.

The governance responsibility for CCTV in Doncaster and also in relation to the centralisation process sits with the Safer Stronger Doncaster Partnership Executive Board and CCTV Theme Group Board. There are clear and effective review and audit mechanisms in place to ensure legal requirements, policies and standards are complied with.



Residents in Doncaster, Rotherham and Barnsley can feel confident that the CCTV systems operated from Doncaster will always be used for a specified purpose which is in pursuit of a legitimate aim and is necessary to meet an identified purpose.

# Priority Three: Reduce Substance and Alcohol Misuse and the Associated Effects on Crime

## Where are we now?

The Partnership recognises that more can be done through the drug and alcohol agenda to improve the safety of all residents of Doncaster. Drug and alcohol misuse does not just affect the individual, but impacts on families and communities. Throughout the lifetime of the 2014-17 strategy the Partnership is committed to effectively contributing to the safety of all residents.

The overall direction and purpose of the partnership strategy for drug and alcohol treatment is set out in the Adult Drug and Alcohol Treatment and Recovery Plan 2013/16 which is supported by yearly treatment plans outlining the specific actions and deliverables. There is now a fully integrated treatment service, which focuses on the issue of dependence rather than substance specific treatments.

The overall number of drug offences has reduced by 14% in 2014/15 compared to the previous year – a clear sign that Partnership efforts are focussing on the right issues.

## Where do we want to be?

Public health is currently leading on the implementation of a 'Hidden Harm Strategy'. Hidden Harm work looks to safeguard children and raise awareness of the potential impact of parental substance misuse on parenting capacity and on children. The strategy will bring together partner agencies from within the adult and children's agendas to focus on the issue and embed this into policy and procedure across the Partnership.

Patterns of drug use are changing nationally and locally and it is a key challenge for all services to respond to these changes.

The use of new, less researched stimulant drugs – often termed 'party drugs' or wrongly referred to as 'legal highs' – is becoming more common. Doncaster recognised the threat posed by this new development and was swift to put in place an effective response using our strong partnership network across all agencies.

A multi-agency thematic group has been specifically commissioned to provide a more robust response to health harms caused by legal highs. Doncaster has taken effective enforcement action against major retailers in the town and this has led to the closure of premises in the Town Centre, using new anti-social behaviour legislation. Being one of the first Authorities in the Country to take this approach, a strong signal has been made that the Partnership recognises this threat and we will use all methods and approaches to raise awareness of this issue and prevent and disrupt the supply using current legislation.

Based upon the Doncaster approach a case study has been developed which is being used by the Home Office to support the case for a change in legislation. This highlights the threat posed by the sale and availability of these products to our residents and young people and the links to incidents of anti-social behaviour.

Last year 238 clients were successfully treated within alcohol and drug misuse programmes in Doncaster.



Nearly 42% of clients were successfully treated within alcohol misuse programmes, which is consistently above the national average of 36%

### How do we get there?

There is now a greater focus on prevention rather than treatment and a revised Prevention Action Plan is being developed which will address a number of areas. This includes the night time economies within Doncaster and working in Partnership with licensing departments and the police to prevent and reduce levels of drug and alcohol related violent crime throughout the borough.

At the other end of the scale are those individuals whose patterns of drug and alcohol misuse are so entrenched that they place a huge burden on emergency services. These have become known nationally as the 'blue-light population'.

Given the current financial landscape and the budget reductions faced by all public sector agencies Doncaster is looking to reduce the burden placed on these services by targeting and working with this group of people following a national best practice model. Whilst certain types of behaviours associated with entrenched patterns of addiction such as street drinking are reducing (a 12% reduction witnessed in 2014/15 compared with the previous year); it is hoped that this work will reduce the harm caused to communities even further.



Doncaster has implemented the MPACT (Moving Parents and Children Together) programme in 2015 to work with parents and children affected by drug or alcohol dependence.

This programme improves family functioning and communication, and protects children from the harmful effects of parental substance misuse and thus improves their future prospects.

The families who are involved in phase one of the project, have benefitted enormously from the support provided by the programme. Therefore the Partnership will be training a further eight practitioners to allow Doncaster to run the programme more frequently and reach more families in the coming year.

Initial meetings with key Partnership officers have taken place to implement the legal highs 'Fast Response' multi-agency team.



# Community Consultations

Consultation with residents and communities plays a key part in the development and annual review of the Community safety Strategy.

In accordance with the Equality Act (2010) we actively sought to engage with voluntary and community organisations that currently work with, or represent people with protected characteristics.

The 2015 Community Safety Consultation took place between the 5th January and 14th February 2015 and engaged with 1,204 people from across Doncaster. This represents a significant increase on previous consultations and has enabled the Strategy review team to gain a better understanding of the needs of our Communities, partner and voluntary groups.

The questionnaire was available on-line, and in paper form and was advertised in traditional and social media.



## *Headline Summary of Responses*

### Q1: Overall do you feel safe living in Doncaster?

Of those who responded to this question, 76% said they felt safe in Doncaster most or all of the time. 3% of people said they never felt safe in Doncaster and information about why people didn't feel safe will be used as a focus of partnership work in the coming year.

### Q2: Where do you feel unsafe?

The majority of respondents to this question reported feeling unsafe at night, with Town Centre being the area where most people said they felt unsafe.

Just over 10% of people who completed the survey said they felt unsafe in their own home. The reasons for these feelings are not always clear however it does perhaps indicate the perceived prevalence of anti-social behaviour, domestic abuse and property crime with the need for the Safer Stronger Doncaster Partnership to ensure its robust links with both the adult and children safeguarding boards are maintained.

### Q3: How effective do you think agencies are at tackling crime and disorder in Doncaster?

72% of the respondents thought the agencies of the partnership were either effective or very effective at tackling crime and disorder. 28% of those who answered this question thought that the agencies of the partnership were not effective.

### Q4: Which, If Any Of Our Existing Priorities Are Of Concern To You?

Almost 60% of the people answering this survey felt that 'Crime' (this can include burglary, robbery, car crime, domestic and sexual violence) was their main concern. 55% told us that Anti-Social Behaviour (this can include groups hanging around on the streets, nuisance motorbikes, noisy neighbours) concerned them most; whilst almost 40% were most concerned with substance misuse (this covers illegal and legal drug misuse and alcohol misuse such as underage drinking and drinking on the streets).

### Q5: Have you been a victim of crime in the last 12 months?

74% of respondents had not been victims of crime, however 26% had been a victim of crime and their feedback is important to us in terms of understanding how we can prevent these crimes and how to improve our services to victims.

### Q6: What suggestions do you have to help the Safer Stronger Doncaster Partnership improve our services? (Responders were given the option to provide more than one response)

The majority of residents (60%) told us that they would like to see more officers from partnership agencies on the streets. Just over a quarter of those who responded wanted to see a quicker response to reported incidents, with a further quarter telling us that they would like us to put more emphasis on educating young people about the effects of crime and anti-social behaviour. Around 5% of respondents would like to see an increase to the CCTV coverage.

The Partnership has a strong focus on education and early intervention with young people as a way of preventing crime and anti-social behaviour. This is achieved through the work of the Stronger Communities Officers working as part of the Area Teams in collaboration with other partners including the Neighbourhood Response Team.

In addition to this the Partnership will be implementing Community Justice Panels as a way of dealing with low level crime and anti-social behaviours and neighbour disputes. The Panels will train community members as volunteer facilitators to bring together the victim and the perpetrator in a controlled way to give the victim a direct say in the justice process. These panels will play a major role in educating communities as to the impact of crime and anti-social behaviour on victims, through allowing the victim to speak directly to the offender and explain the harm caused.

The partnership is committed to continue the good progress that has been made

Work is being undertaken with St Leger Homes to increase the coverage of the CCTV network in some residential areas within Doncaster and the Partnership now has access to re-deployable CCTV, which we can use in areas identified as crime or anti-social behaviour hot spots. These cameras have been successfully used in many areas of Doncaster to provide reassurance and act as a strong deterrent to offenders.

### What Happens Next?

The Safer Stronger Doncaster Partnership held a development day where many of the issues identified within the consultation and the new challenges faced by the Partnership were discussed. There was recognition of our achievements and a reinforced commitment from all major partners that as our organisations undertake change, we will recognise the value in working together collectively to achieve our partnership goals and aspirations.

A review of our Governance arrangements will take place and this will include the current structure of our thematic groups to strengthen our accountability and produce more focused outcomes around our priorities and those identified within the refresh of our Community Safety Strategy.

Progress against these targets will also be reported to the public through the established PACT meeting structure, elected members, newsletters and all forms of electronic and local media. The minutes from the SSDP meetings will also be published on the [teamdoncaster.org.uk](http://teamdoncaster.org.uk) website.

## Communicating with residents about our work

People receive information and form perceptions about crime and anti-social behaviour from many different sources, all of which contribute to how safe they feel in our communities. We want people living and visiting to feel safe in Doncaster and this means providing accurate information about the work of the partnership.

The Partnership works together to ensure key messages are effectively communicated and residents have the information they need to access services and raise awareness of crime and disorder issues. Strong links have been formed with the media in Doncaster and South Yorkshire and by using these relationships press and marketing campaigns have proved to be effective.

Some examples of partnership marketing activity are:

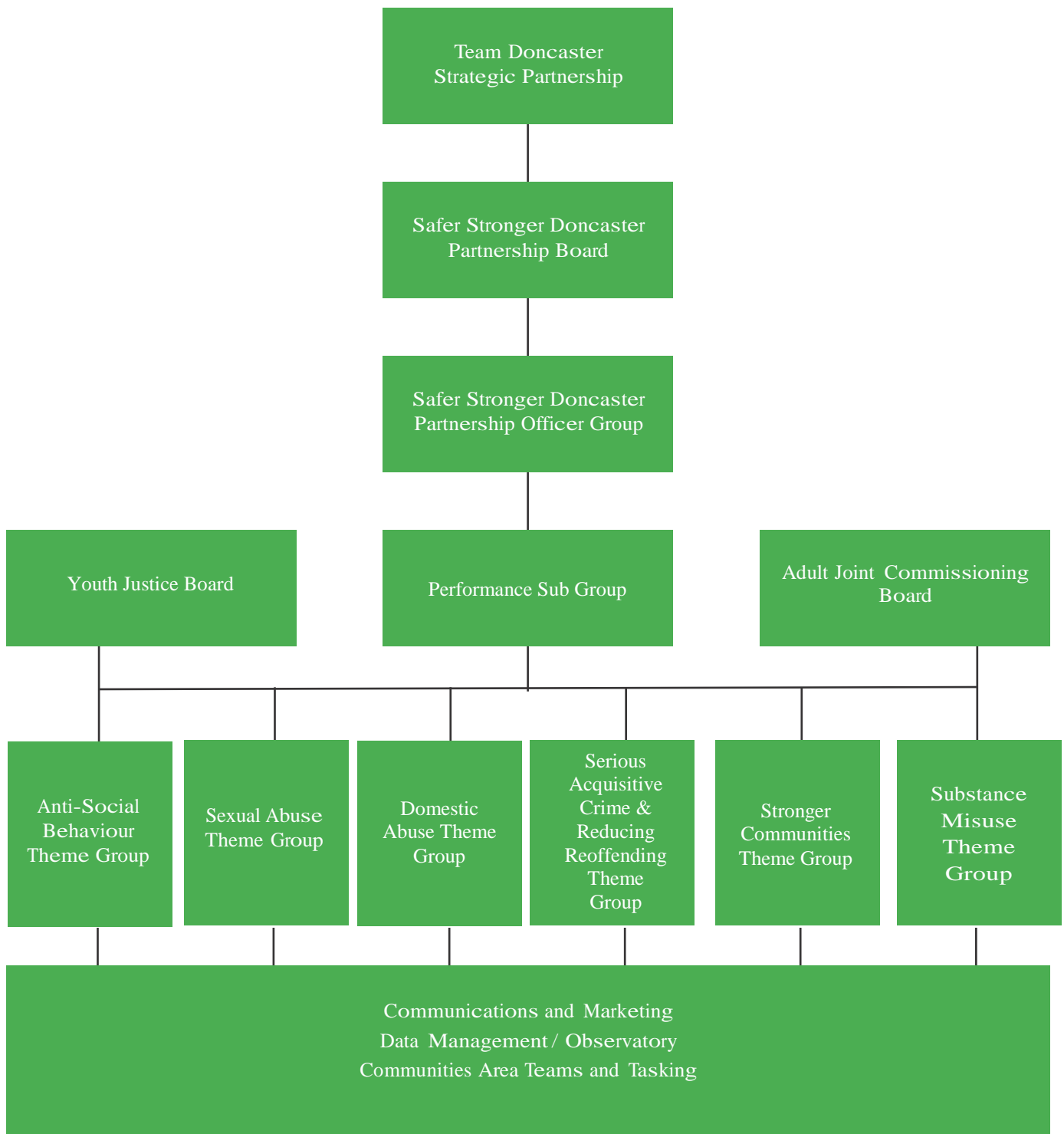
- Awareness raising campaign to encourage people to report anti-social behaviour. This has included radio adverts and the design of a new logo to reinforce our zero tolerance approach.
- Developing existing domestic abuse campaign materials to help reach a wider audience.
- A Christmas crime prevention campaign.
- Best Bar None promotion of this nationally recognised scheme which aims to make licensed premises safer and reduce alcohol related crime and disorder.



- The launch of the regional Special Constables recruitment campaign.
- Publicity for the Neighbourhood Response Team including the launch of the Integrated Services Scheme when Doncaster Council became the first local authority in South Yorkshire to start using Police Powers to tackle street drinking and firework nuisance.
- Successful launch of the Community Trigger scheme, which allows the public to request a review of how agencies have collectively managed their anti-social behaviour case. This was done ahead of the national launch date.
- Ongoing work to raise public awareness around the priority issues such as anti-social behaviour, domestic abuse, crime prevention, and criminal damage.
- Safer Neighbourhood Team Newsletters
- The Community Safety Strategy minutes and on-going work of the Partnership will be published on the Team Doncaster website and can be accessed following this link [www.teamdoncaster.org.uk](http://www.teamdoncaster.org.uk).



# SAFER STRONGER DONCASTER



# Conclusion

Overall in 2014/15 the Partnership has continued to achieve successful reductions in crime and anti-social behaviour. Between February and April 2015, anti-social behaviour fell by 4% and house burglaries by 33%, when compared to the same period last year. Reported incidents of Domestic Abuse to the Police also saw the first reduction in over 10 years during 2014/15.

Over the last 3 years overall crime has reduced by 7% which equates to 2,000 fewer victims of crime.

The Partnership acknowledges the difficult landscape we are in and continues to use innovative methods to ensure that we continue to work together to produce better outcomes for our communities.

Communities will also be encouraged to become more active in keeping Doncaster safe with the introduction of Community Justice Panels. These panels will provide a more victim focussed way of dealing with anti-social behaviour, as well as allowing the wider

community the opportunity to participate in the justice process.

The results of the 2015 Community Safety Consultation are encouraging, and demonstrate that in general residents have a positive perception of the work of the partnership. Most residents feel safe and the majority of those who responded think that Partnership agencies are effective in tackling crime and disorder.

It also showed that the Partnership continues to focus its resources on the issues which are of most concern to the residents of Doncaster.

For more information on any of the work described in our Strategy or if you are interested in becoming a Community Justice Panel volunteer, please contact Doncaster Council Community Safety Team.

Tel 01302 736905

Email: [community.safety@doncaster.gov.uk](mailto:community.safety@doncaster.gov.uk)



# Appendix A – Safer Stronger Doncaster Partnership Member Organisations:

- Doncaster Council, including Elected Councillors
- Public Health
- Children’s Trust
- South Yorkshire Police
- St Leger Homes
- Prison Service
- Probation Service
- Community Rehabilitation Company
- South Yorkshire Fire and Rescue Service
- Office of the Police and Crime Commissioner
- Clinical Commissioning Group
- Public Health England
- South Yorkshire Criminal Justice Board
- Court Service
- Third Sector – Victim Support, New Horizons





Doncaster Council Community Safety Team.

Tel: 01302 736905

Email: [community.safety@doncaster.gov.uk](mailto:community.safety@doncaster.gov.uk)